



**Description**

EverGuard<sup>®</sup> TPO Walkway Roll provides roofing contractors with an easy-to-install factory-built detail. EverGuard<sup>®</sup> TPO Walkway Rolls are manufactured using GAF's proven, durable EverGuard<sup>®</sup> TPO as well as recycled TPO.

**Durable...**

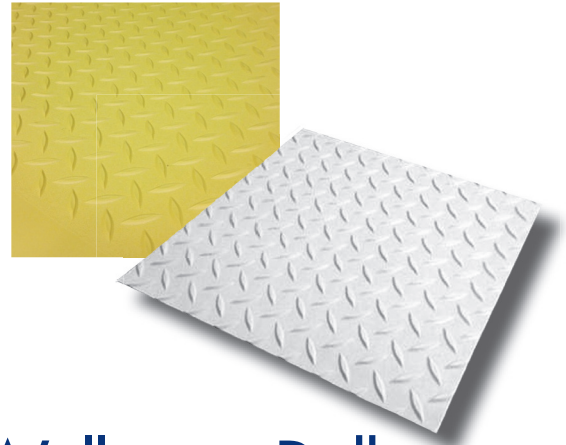
The EverGuard<sup>®</sup> TPO Walkway Roll is designed to protect the membrane in areas exposed to rooftop traffic for maintenance access or other uses. These areas include HVAC, roof hatches, access doors, etc. The EverGuard<sup>®</sup> TPO Walkway Roll is required on a GAF-warranted roofing system.

**Options...**

In addition to a standard Gray TPO Walkway Roll, GAF has recently introduced Yellow Walkway Rolls to the market. These "safety" Yellow Walkway Rolls are great for sensitive areas of a roof, such as perimeters, around skylights, or in areas of low clearance.

**Product Highlights**

- Great traction with diamond plate design
- Walkways have smooth edges for easy weldability
- Manufactured using recycled TPO with superior weatherability built in
- Comes in standard Gray and Yellow
- 34" x 50' (864 mm x 15.24 m) (diamond pattern measures 30" [762 mm] with 2" [51 mm] smooth on both edges)
- 125 mil thickness
- 118 lbs. (54 kg) per roll



**Walkway Roll**

**Application**

**Heat weld** – Heat-weld EverGuard<sup>®</sup> TPO Walkway Roll to the roof membrane surface continuously around the walkway roll perimeter.

- Walkway rolls must be spaced 6" (152 mm) to allow for drainage.

**Tape** – EverGuard<sup>®</sup> TPO Walkway Roll may also be installed with TPO primer and 3" (76 mm) seam tape.

- First, roll or brush the TPO primer on the back of the TPO roll along the edges and down the middle length of the roll.
- Clean and prime the roof membrane where the roll will be installed.
- Install tape to the back of the roll where cleaned (edges and middle) and roll-in with a silicone hand roller.
- Remove the release paper and install the taped rolls directly onto the roof membrane. Secure the rolls by rolling into place.
- Walkway rolls must be spaced 6" (152 mm) to allow for drainage.

EverGuard<sup>®</sup> TPO accessories are designed for use with GAF EverGuard<sup>®</sup> TPO single-ply membranes and with EverGuard Extreme<sup>®</sup> and EverGuard Freedom<sup>™</sup> TPO self-adhering membranes. The factory-coated accessories may be installed on mechanically attached, fully adhered, or self-adhered EverGuard<sup>®</sup> TPO roofing systems.

See published application and specifications manual for detailed instructions.

Quality You Can Trust...From North America's Largest Roofing Manufacturer!<sup>™</sup>

### Description

EverGuard® TPO Yellow Safety Tape is a 6" (152 mm) wide by 100' (30.48 m) long cover tape. EverGuard® TPO Yellow Safety Tape is made up of nominal 30 mil unreinforced TPO and is ideal for providing a warning to take caution around a variety of potential hazards on the roof, including:

- Roof edges
- Skylights
- Expansion joints
- Solar panels
- Other rooftop equipment

Coatings of paint have to be maintained over time, whereas EverGuard® TPO Yellow Safety Tape requires less maintenance and is built to last for years.

EverGuard® TPO Yellow Safety Tape may be used in conjunction with EverGuard® Yellow Walkway Rolls, and can help make the roof safer for everyone who needs access to it.

### Application

Clean the entire surface to be covered with soap and water, and dry entire area. Wipe area to be primed with a damp wipe of EverGuard® TPO Seam Cleaner.

Prime surfaces mating with the butyl tape with EverGuard® TPO Primer, keeping primer only on the surface receiving the tape.

After primer has dried, pull release paper on the back of the tape, exposing the butyl adhesive, and mate the two surfaces.

Roll the tape portion of the cover strip at a 45-degree angle to ensure a good bond.\*



## Yellow Safety Tape

- Identifies areas to take caution
- Easy to install
- Built to last for years

SPECIFICATIONS	
Width:	6" (152 mm)
Length:	100' (30.48 m)
SHIPPING SPECIFICATIONS	
Qty per box:	2
Weight per box:	38 lbs / 17.24 kg
Boxes per pallet:	36
PRODUCT SKU	
TPO Yellow Safety Tape	755F902

\*See EverGuard® Application and Specifications Manual for detailed application instructions and additional information on Yellow Safety Tape and Cover Tape.

### Also Available...





# EverGuard EXTREME

Advanced Protection® TPO

## Accessory

TPO Accessories

### Description

EverGuard Extreme® TPO Heat-Weldable Cover Tape provides roofing contractors with an easy-to-install factory-built detail. EverGuard Extreme® Heat-Weldable Cover Tape is constructed from GAF's proven, durable, high-performance EverGuard Extreme® TPO.

- **Cost effective...**  
Reduces installed costs
- **Improved reliability...**  
Factory-built accessories reduce risk of leaks and callbacks
- **Improved aesthetics...**  
Uniform look

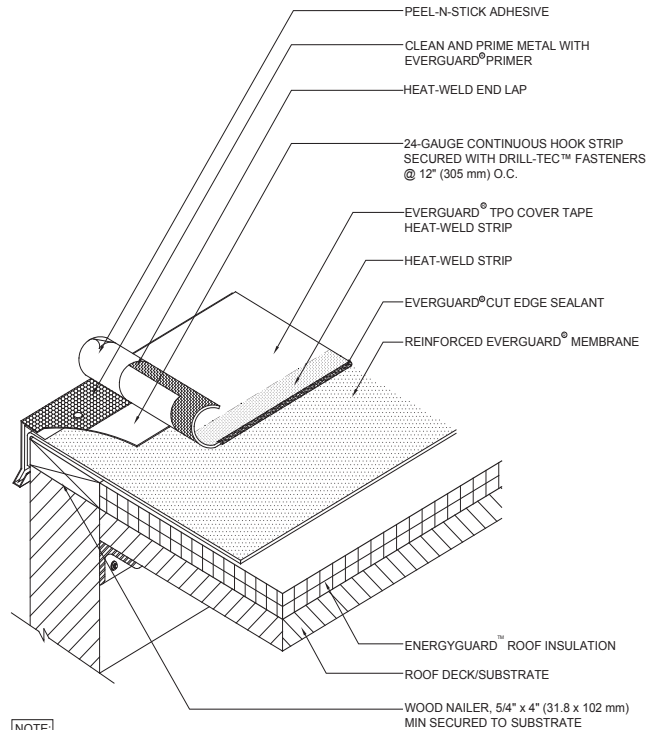
### Application

EverGuard Extreme® TPO Heat-Weldable Cover Tape is constructed from reinforced 45 mil EverGuard Extreme® TPO membrane; the six-inch-wide (152 mm) tape has a three-inch (76 mm) self-adhered area and a three-inch (76 mm) heat-weldable area. The self-adhered membrane area is adhered to primed edge metal while the heat-weldable area is attached to the roofing membrane using the welding machine of choice. EverGuard Extreme® TPO Heat-Weldable Cover Tape is eligible for inclusion in the EverGuard® Diamond Pledge™ NDL Roof Guarantee\*.

See published application and specifications manual for detailed instructions.

### Product Information

EverGuard Extreme® TPO Heat-Weldable Cover Tape is packaged as a hundred-foot (30.5 m) roll with two rolls in every box.



**NOTE:**

1. TPO COVER TAPE ONLY TO BE USED WITH TPO MEMBRANE SYSTEMS.
2. CLEAN METAL AND MEMBRANE WITH EVERGUARD® TPO CLEANER AND LET DRY.
3. PRIME THE METAL ONLY WITH EVERGUARD® TPO PRIMER. DO NOT SPILL PRIMER ON WELDED SEAM AREA.
4. HOT AIR-WELD THE MEMBRANE TO MEMBRANE AREA USING EITHER A ROBOTIC OR HAND WELDER TO SPEC.

## Heat-Weldable Cover Tape

### Specifications

**Roll Length:** 100' (30.5 m)  
**Roll Width:** 6" (152 mm)

### Shipping Specifications

**Rolls per Carton:** 2  
**Weight of Carton:** 34 lbs. (15.42 kg)  
**Cartons per Pallet:** 27

### Code Approvals

- UL Listed Accessory
- Texas Department of Insurance
- ICC-ES

Quality You Can Trust... From North America's Largest Roofing Manufacturer!™

[gaf.com](http://gaf.com)

\* See EverGuard® Diamond Pledge™ NDL Roof Guarantee for complete coverage and restrictions.

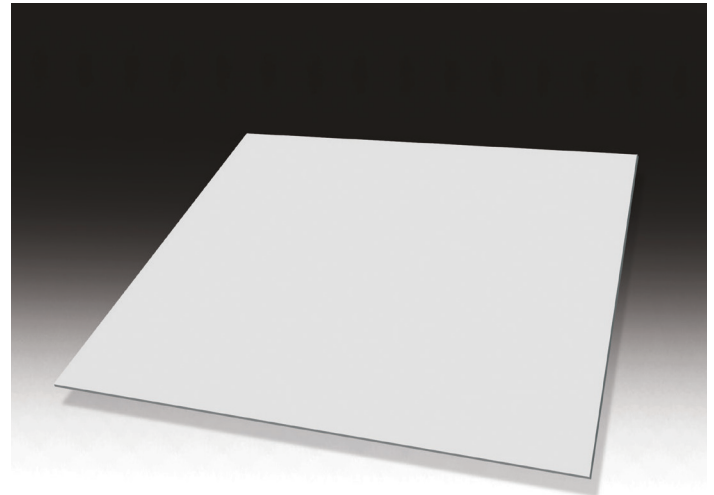


### Description

EverGuard<sup>®</sup> TPO Coated Metal Sheets are constructed with TPO membrane laminated to galvanized sheet metal.

### Product Information

- 24-gauge steel with a 25-mil thick membrane film
- Cuts and forms like standard sheet metal
- Field and flashing TPO membrane heat welds directly to coated metal
- For metal gravel stop and drip edges, metal base and curb flashing, sealant pans, and scupper sleeves
- Available in both EverGuard<sup>®</sup> and EverGuard Extreme<sup>®</sup> TPO



## EverGuard<sup>®</sup> TPO Coated Metal Sheets

- 4' (1.21 m) x 10' (3.05 m) sheets
- 5, 10, or 30 sheets per pallet; 40 lb. (18.14 kg)/sheet
- Also available in (allow 2 – 4 weeks lead time):
  - Coated Aluminum – 23 lb. (10.43 kg)/sheet
    - 25-mil TPO and 40-gauge corrosion-resistant aluminum
  - Coated Stainless – 40 lb. (18.14 kg)/sheet
    - 25-mil TPO and 24-gauge stainless steel
  - 20-gauge Galvanized – 60 lb. (27.22 kg)/sheet
    - 25-mil TPO and 20-gauge galvanized steel

Quality You Can Trust... From North America's Largest Roofing Manufacturer!™

[gaf.com](http://gaf.com)

Visit [gaf.com](http://gaf.com) to see our full line of prefabricated accessories!



# EverGuard EXTREME<sup>®</sup>

Advanced Protection<sup>®</sup> TPO

Accessory

TPO ACCESSORIES

## Description

EverGuard Extreme<sup>®</sup> TPO UN-55 Detailing Membrane provides roofing contractors with an easy-to-install factory-built detail. EverGuard Extreme<sup>®</sup> TPO UN-55 Detailing Membrane is constructed using GAF's proven, durable, high-performance EverGuard Extreme<sup>®</sup> TPO. This accessory is used as an alternative material for flashing penetrations and corners of base and curb flashing.

- **Cost effective...**  
Reliability is built in; made with GAF EverGuard Extreme<sup>®</sup> TPO membrane
- **Improved reliability...**  
Factory-built accessories reduce risk of leaks and callbacks

## Application

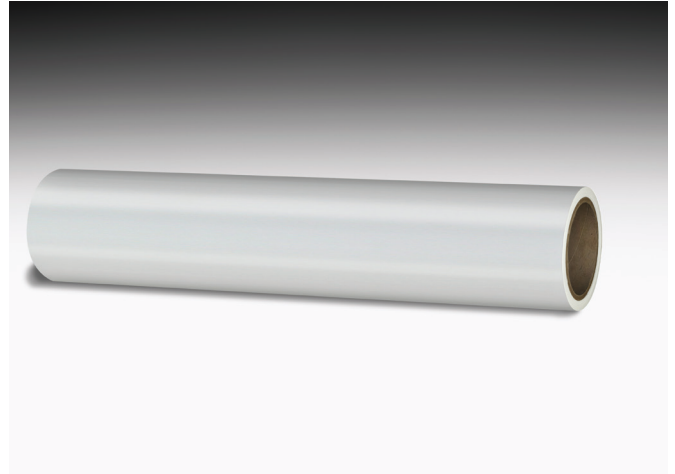
EverGuard Extreme<sup>®</sup> TPO UN-55 Detailing Membrane is designed for use with GAF EverGuard Extreme<sup>®</sup> TPO, EverGuard<sup>®</sup> TPO, and EverGuard<sup>®</sup> Freedom<sup>™</sup> Self-Adhering TPO. UN-55 Detailing Membrane may be installed on:

- EverGuard<sup>®</sup> TPO 45, 60, and 80 mil mechanically attached or fully adhered roofing systems
- EverGuard Extreme<sup>®</sup> TPO 50, 60, 70, and 80 mil mechanically attached or fully adhered roofing systems
- EverGuard<sup>®</sup> Freedom<sup>™</sup> TPO 45, 60, and 80 mil self-adhering roofing systems

See published application and specifications manual for detailed instructions.

## Product Information

EverGuard Extreme<sup>®</sup> TPO UN-55 Detailing Membrane come standard in White. The membrane is unreinforced, so it's easier to work with at difficult flashing details.



## UN-55 Detailing Membrane

- Manufactured to strict specifications using GAF's high-performance EverGuard Extreme<sup>®</sup> TPO formulation
- Designed for ease of installation
- Alternative flashing/reinforcement material for penetrations and corners

SPECIFICATIONS	
Roll Size:	24" x 50' (610 mm x 15.24 m) rolls
Material:	55 mil unreinforced TPO membrane
SHIPPING SPECIFICATIONS	
Weight per roll:	28 lbs (12.7 kg)

Quality You Can Trust...From North America's Largest Roofing Manufacturer!<sup>™</sup>

[gaf.com](http://gaf.com)

Visit [gaf.com](http://gaf.com) to see our full line of prefabricated accessories!



# EverGuard EXTREME<sup>®</sup>

Advanced Protection<sup>®</sup>TPO

## Molded Accessories

# TPO Molded Accessories

### Description

EverGuard Extreme<sup>®</sup> TPO single-ply roofing system molded accessories provide roofing contractors an easy-to-install, factory-built detail. EverGuard Extreme<sup>®</sup> molded accessories are manufactured using a proprietary formulation designed for use with GAF's EverGuard Extreme<sup>®</sup> TPO single-ply membranes.

- **Cost effective...**  
Reduces installed costs
- **Improved Reliability...**  
Factory-built accessories reduce risk of leaks and callbacks
- **Improved aesthetics...**  
Uniform look

### Application

EverGuard Extreme<sup>®</sup> TPO molded accessories are designed for use with GAF EverGuard Extreme<sup>®</sup> TPO single-ply membranes. The molded accessories may be installed on mechanically attached, fully adhered, or self-adhered EverGuard Extreme<sup>®</sup> TPO roofing systems. EverGuard Extreme<sup>®</sup> molded accessories are installed using conventional techniques. See published application and specifications manual for detailed instructions.

### Product Information

EverGuard Extreme<sup>®</sup> Fluted Corners are molded from a proprietary TPO formulation engineered to work with EverGuard Extreme<sup>®</sup> TPO single-ply membranes. Fluted Corners allow for easy flashing of non-uniform corners.



## Fluted Corner

- Manufactured to accommodate imperfect corners
- Designed for ease of welding in tight areas
- Fluted Corners are formed using unreinforced membrane to a nominal 50 mil thickness

SPECIFICATIONS	
Diameter:	8"
Nominal thickness:	.050"
SHIPPING SPECIFICATIONS	
Corners per carton:	20
Weight per carton:	2.5 lbs.
Cartons per pallet:	250

Quality You Can  
Trust... From  
North America's  
Largest Roofing  
Manufacturer!<sup>™</sup>

[gaf.com](http://gaf.com)

Visit [gaf.com](http://gaf.com) to see our full line of pre-fabricated accessories!



# EverGuard EXTREME

Advanced Protection® TPO

## Molded Accessories

# TPO Molded Accessories

### Description

EverGuard Extreme® TPO single-ply roofing system molded accessories provide roofing contractors an easy-to-install, factory-built detail. EverGuard Extreme® molded accessories are manufactured using a proprietary formulation designed for use with GAF's EverGuard Extreme® TPO single-ply membranes.

- **Cost effective...**  
Reduces installed costs
- **Improved reliability...**  
Factory-built accessories reduce risk of leaks and callbacks
- **Improved aesthetics...**  
Uniform look

### Application

EverGuard Extreme® TPO molded accessories are designed for use with GAF EverGuard Extreme® TPO single-ply membranes. The molded accessories may be installed on mechanically attached, fully adhered, or self-adhered EverGuard Extreme® TPO roofing systems. EverGuard Extreme® molded accessories are installed using conventional techniques. See published application and specifications manual for detailed instructions.

### Product Information

EverGuard Extreme® Inside Corners are molded from a proprietary TPO formulation engineered to work with EverGuard Extreme® TPO single-ply membranes. Inside corners allow for fast flashing of base and curb corners.



## Inside Corner

- Manufactured to accommodate inside corners of base and curb flashings
- Designed for ease of welding in tight areas
- Inside Corners are formed using unreinforced membrane to a nominal 50 mil thickness

SPECIFICATIONS	
Membrane thickness:	.050"
Corner dimensions:	6" x 6" x 5 1/4"
SHIPPING SPECIFICATIONS	
20 Corners per carton:	3.5 lbs/carton
Cartons per pallet:	54
PRODUCT SKUs	
White	8509776WA

Quality You Can  
Trust... From  
North America's  
Largest Roofing  
Manufacturer!™

[gaf.com](http://gaf.com)

Visit [gaf.com](http://gaf.com) to see our full line of pre-fabricated accessories!



# EverGuard<sup>®</sup>TPO SINGLE-PLY ROOFING SYSTEMS

## Sealant

# TPO Sealants

### Description

EverGuard<sup>®</sup> One-Part Pourable Sealant is a one-part, moisture-cure, self-leveling sealant designed for use in pitch pans on single-ply roof systems. Since moisture-cure sealants cure with moisture in the air, it is suitable for application in damp and cold climates, as well as in dry climates. EverGuard<sup>®</sup> One-Part Pourable Sealant is solvent free, contains no isocyanates, and will not shrink upon curing. It does not "outgas" or bubble on damp surfaces as urethane sealants often do. EverGuard<sup>®</sup> One-Part Pourable Sealant is elastomeric and has excellent adhesion to most construction materials. It has a low durometer, which accommodates greater movement in penetration seals than typical urethane sealants.

### Use

EverGuard<sup>®</sup> One-Part Pourable Sealant is designed for use with the EverGuard<sup>®</sup> Pourable Sealer Pocket on new and existing TPO roofs to seal irregular penetrations, such as metal frames, wires, and pipes. Note: EverGuard<sup>®</sup> TPO Primer is required to prime the TPO surface before use.

### Advantages

- Solvent free – less than 25 g/L VOC
- 100% solid – will not shrink
- No outgassing on damp surfaces
- Self-leveling provides a smooth, professional finished look
- Good color stability
- 20-minute skinover time
- Paintable within 24 hours
- No special tools or mixing required
- Application at temperatures as low as 30°F (-1°C)



## One-Part Pourable Sealant

TYPICAL PROPERTIES	
VOC (max)	<25 grams/liter
Service Temperature	-40°F (-40°C) to 200°F (93.3°C)
Full Cure	Rate of cure is dependent on atmospheric conditions. Curing proceeds at a rate of ¼" (6.35 mm) a week at 70°F (22°C) and 50% relative humidity. Lower temperature and humidity will slow the rate of cure. Higher temperature and humidity will accelerate rate of cure. Depths of more than 2" (51 mm) will cure through in 2 to 3 months.
Skin Time	Approximately 20 minutes at 70°F (22°C) and 50% relative humidity.
Shrinkage	0%
Tensile Strength	146 lbf (217 kg/m)
Elongation	300% ± 25%
Density	8.9 ± .2 lb. per gallon (1.068 g/ml)

Quality You Can Trust... From North America's Largest Roofing Manufacturer!™

[gaf.com](http://gaf.com)

# EverGuard<sup>®</sup>TPO

## SINGLE-PLY ROOFING SYSTEMS

### Approvals & Certification

- Conforms to OTC Rule for Sealants and Caulks
- Meets requirements of California Regulations: CARB, BAAQMD, and SCAQMD
- Conforms to California Proposition 65
- Conforms to USDA Requirements for Non-food Contact

### Environmental Standards

LEED<sup>®</sup> 2.2 for New Construction and Major Renovations:

- Low-Emitting Materials (Section 4.1) 1 Point

NAHB Model Green Home Building Guidelines:

- 5 Global Impact Points

VOC Content:

- Less than 25 grams/liter ASTM D2369 EPA Method 24 (tested at 240°F [115°C])

### Application Temperature

EverGuard<sup>®</sup> One-Part Pourable Sealant can be applied at temperatures as low as 30°F (-1°C). In these colder temperatures, it is recommended to keep the material stored inside or in a truck before using.

### Application Instructions

Surface should be clean, dry, and free of any loose materials. Remove all previously applied caulk, mastic, cement, and other contaminants from penetrations with a cleaner. All roof deck voids are to be filled with FlexSeal<sup>™</sup> Sealant. Prime all surfaces with EverGuard<sup>®</sup> TPO Primer. Allow primer to dry prior to applying EverGuard<sup>®</sup> One-Part Pourable Sealant. Fill the EverGuard<sup>®</sup> Pourable Sealer Pocket with EverGuard<sup>®</sup> One-Part Pourable Sealant to the top of the pocket, ensuring that all voids are filled. See GAF's published application and specifications manual for complete details.

### Clean-up

Wet adhesive can be removed using a solvent, such as alcohol. Cured EverGuard<sup>®</sup> One-Part Pourable Sealant can be removed by abrading or scraping the substrate.

### Cure Time

EverGuard<sup>®</sup> One-Part Pourable Sealant is a moisture-cure sealant. Rate of cure is dependent on atmospheric conditions. Curing proceeds at a rate of ¼" (6 mm) a week at 70°F (22°C) and 50% relative humidity. Lower temperature and humidity will slow the rate of cure. Higher temperature and humidity will accelerate

rate of cure. Depths of more than 2" (51 mm) will cure through in 2 to 3 months.

### Packaging

- .053 gallon (2L) pouch
- 4 pouches/case
- 48 cases/pallet

### Color

White

### Storage

- Recommended storage is between 40°F–90°F (4°C–32.2°C). Store unopened containers in a cool, dry area. Protect unopened containers from water, heat, and direct sunlight. Although EverGuard<sup>®</sup> One-Part Pourable Sealant will not freeze, it is recommended to store indoors before using to ensure easy gunning and leveling.

### Shelf Life

One year from date of manufacture when stored in recommended conditions. Elevated temperature and high relative humidity may significantly reduce shelf life.

### Precautions

- Do not apply at temperatures below 30°F (-1°C).
- Do not use on TPO without EverGuard<sup>®</sup> TPO Primer.
- Do not use on Hypalon<sup>®</sup> membranes.
- Do not install if rain is anticipated within 4 hours.
- Do not use in areas subject to continuous water immersion.
- Do not use in areas where prolonged chemical exposure is anticipated.
- Do not prime bonding surfaces with asphalt primer.
- Use TOPCOAT<sup>®</sup> FlexSeal<sup>™</sup> Elastomeric Sealant as a "night sealant" around the base of the penetration. Do not use petroleum-based solvents, such as mineral spirits, for cleaning purposes.
- Maintain sealant at room temperature before applying to ensure easy gunning and leveling.
- Test and evaluate to ensure adequate adhesion.
- Dry all visible and standing water prior to applying sealant.

### For Application Questions

Contact GAF Technical Services at 1-800-766-3411 or visit [gaf.com](http://gaf.com).



# EverGuard EXTREME<sup>®</sup>

Advanced Protection<sup>®</sup> TPO

Accessory

TPO ACCESSORIES

## Description

EverGuard Extreme<sup>®</sup> TPO Universal Corners provide roofing contractors with an easy-to-install factory-built detail. EverGuard Extreme<sup>®</sup> TPO Universal Corners are manufactured using a proprietary formulation that is designed for use with GAF's high-performance EverGuard Extreme<sup>®</sup> TPO single-ply membranes.

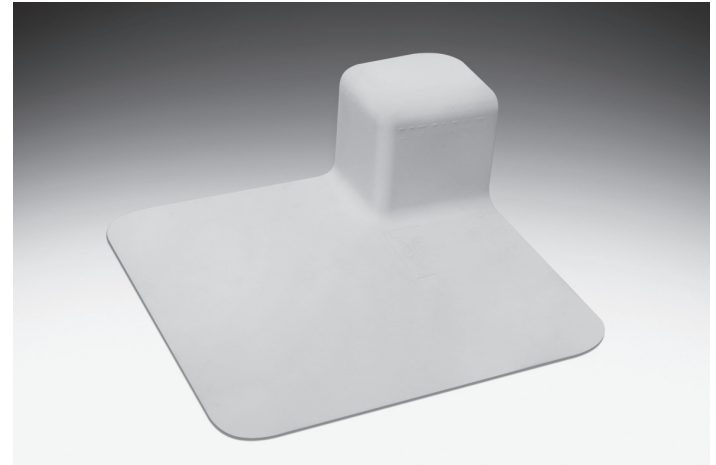
- **Cost effective...**  
Reduces installed costs by up to 25% compared to field fabrication
- **Improved reliability...**  
Factory-built accessories reduce risk of leaks and callbacks
- **Improved aesthetics...**  
Uniform look
- **Proven performance...**  
Same high-heat properties as our EverGuard Extreme<sup>®</sup> TPO membranes

## Application

EverGuard Extreme<sup>®</sup> TPO Universal Corners are designed for use with GAF EverGuard Extreme<sup>®</sup> TPO, EverGuard<sup>®</sup> TPO, and EverGuard<sup>®</sup> Freedom<sup>™</sup> Self-Adhering TPO. Universal Corners may be installed on:

- EverGuard<sup>®</sup> TPO 45, 60, and 80 mil mechanically attached or fully adhered roofing systems
- EverGuard Extreme<sup>®</sup> TPO 50, 60, 70, and 80 mil mechanically attached or fully adhered roofing systems
- EverGuard<sup>®</sup> Freedom<sup>™</sup> TPO 45, 60, and 80 mil self-adhering roofing systems

See published application and specifications manual for detailed instructions.



## Universal Corner

- One standard size
- Can be cut to accommodate use as either an inside or outside corner reinforcement

SPECIFICATIONS	
Size:	3" x 3" (76 mm x 76 mm) with 6" (152 mm) flange
Thickness:	0.070" (1.78 mm)
SHIPPING SPECIFICATIONS	
Corners per carton:	20
Weight per carton:	9 lbs (4.08 kg)
Cartons per pallet:	232
PRODUCT SKU	
White	7731776CU

Quality You Can Trust...From North America's Largest Roofing Manufacturer!<sup>™</sup>

[gaf.com](http://gaf.com)

Visit [gaf.com](http://gaf.com) to see our full line of prefabricated accessories!



# EverGuard EXTREME<sup>®</sup>

Advanced Protection<sup>®</sup> TPO

Accessory

TPO ACCESSORIES

## Description

EverGuard Extreme<sup>®</sup> TPO Vent Boots provide roofing contractors with an easy-to-install factory-built detail. EverGuard Extreme<sup>®</sup> TPO Vent Boots are manufactured using a proprietary formulation that is designed for use with GAF's high-performance EverGuard Extreme<sup>®</sup> TPO single-ply membranes.

- **Cost effective...**  
Reduces installed costs by up to 25% compared to field fabrication
- **Improved reliability...**  
Factory-built accessories reduce risk of leaks and callbacks
- **Improved aesthetics...**  
Uniform look
- **Proven performance...**  
Same high-heat properties as our EverGuard Extreme<sup>®</sup> TPO membranes

## Application

EverGuard Extreme<sup>®</sup> TPO Vent Boots are designed for use with GAF EverGuard Extreme<sup>®</sup> TPO, EverGuard<sup>®</sup> TPO, and EverGuard<sup>®</sup> Freedom<sup>™</sup> Self-Adhering TPO. Vent Boots may be installed on:

- EverGuard<sup>®</sup> TPO 45, 60, and 80 mil mechanically attached or fully adhered roofing systems
- EverGuard Extreme<sup>®</sup> TPO 50, 60, 70, and 80 mil mechanically attached or fully adhered roofing systems
- EverGuard<sup>®</sup> Freedom<sup>™</sup> TPO 45, 60, and 80 mil self-adhering roofing systems

See published application and specifications manual for detailed instructions.



## Vent Boot

- One standard size
- Accommodates most common pipes and conduits
- Supplied with stainless steel clamping rings

SPECIFICATIONS	
Membrane thickness:	0.065" (1.65 mm)
For pipe sizes:	1" – 6" (25.4 – 152 mm) dia.
SHIPPING SPECIFICATIONS	
Boots per carton:	6
Weight per carton:	9 lbs (4.1 kg)
Cartons per pallet:	48
PRODUCT SKU	
Vent Boot White	7710776CU

Quality You Can Trust...From North America's Largest Roofing Manufacturer!<sup>™</sup>

[gaf.com](http://gaf.com)

Visit [gaf.com](http://gaf.com) to see our full line of prefabricated accessories!



# EverGuard EXTREME<sup>®</sup>

Advanced Protection<sup>®</sup>TPO

Accessory

TPO Accessories

## Description

EverGuard Extreme<sup>®</sup> Corner Curb Wraps provide roofing contractors with an easy-to-install factory-built detail. EverGuard Extreme<sup>®</sup> Corner Curb Wraps are constructed from GAF's proven, durable EverGuard Extreme<sup>®</sup> TPO single-ply reinforced membrane.

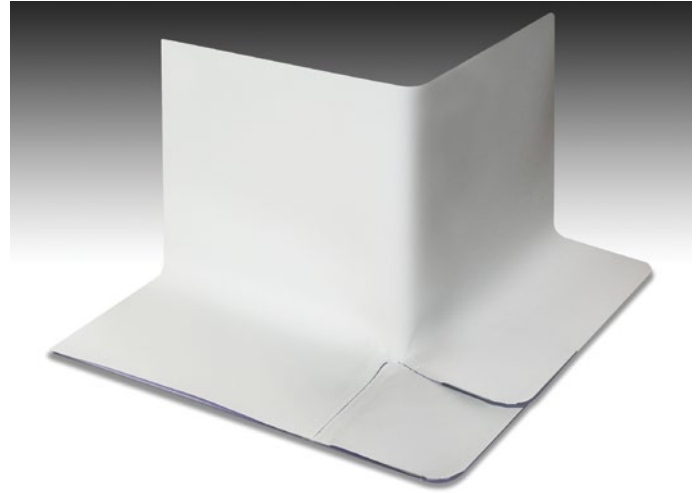
- **Cost effective...**  
Reduces installed costs vs. field fabrication
- **Improved reliability...**  
Factory-built accessories reduce risk of leaks and callbacks
- **Improved aesthetics...**  
Uniform look

## Application

EverGuard Extreme<sup>®</sup> Corner Curb Wraps are designed for use with GAF EverGuard Extreme<sup>®</sup> TPO single-ply membranes. The Corner Curb Wraps may be installed on mechanically attached or adhered EverGuard Extreme<sup>®</sup> TPO roofing systems. Corner Curb Wraps are installed using conventional heat-welding techniques. See published application and specifications manual for detailed instructions.

## Product Information

EverGuard Extreme<sup>®</sup> Corner Curb Wraps are constructed from EverGuard Extreme<sup>®</sup> reinforced 45 mil TPO membrane. Four standard sizes of Corner Curb Wraps are available. Each Corner Curb Wrap is 12" (305 mm) in height and has a 6" (152 mm) base area for welding to field membrane.



## Corner Curb Wrap

- Available in 4 standard sizes
- Available in white, gray, and tan
- Custom sizes also available\*

SPECIFICATIONS	
Height:	12" (305 mm)
Base:	6" (152 mm)
Length:	13.5" (343 mm), 19.5" (495 mm), 25.5" (648 mm), 31.5" (800 mm)
SHIPPING SPECIFICATIONS	
Curbs per box:	4
Weight per box:	
13.5" (343 mm)	5.6 lbs. (2.54 kg)
19.5" (495 mm)	7.4 lbs. (3.36 kg)
25.5" (648 mm)	10.7 lbs. (4.85 kg)
31.5" (800 mm)	12.5 lbs. (5.67 kg)
Boxes per pallet:	32
SHIPPING SPECIFICATIONS	
White 13.5" (343 mm)	81E2776
White 19.5" (495 mm)	81E6776
White 25.5" (648 mm)	81E7776
White 31.5" (800 mm)	81E5776

\*Contact your local representative for details.

Quality You Can Trust...From North America's Largest Roofing Manufacturer!™

[gaf.com](http://gaf.com)

Visit [gaf.com](http://gaf.com) to see our full line of prefabricated accessories!



# EverGuard EXTREME<sup>®</sup>

Advanced Protection<sup>®</sup> TPO

Preformed  
Accessories

TPO Preformed Accessories

## Description

EverGuard Extreme<sup>®</sup> TPO single-ply roofing system preformed accessories provide roofing contractors an easy-to-install, factory-built detail. EverGuard Extreme<sup>®</sup> preformed accessories are constructed from GAF's proven durable EverGuard Extreme<sup>®</sup> TPO single-ply reinforced membrane.

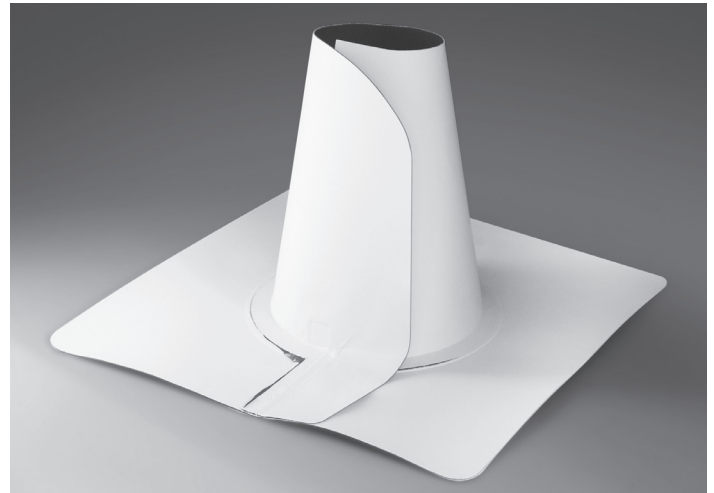
- **Cost effective...**  
Reduces installed costs
- **Improved reliability...**  
Factory-built accessories reduce risk of leaks and callbacks
- **Improved aesthetics...**  
Uniform look

## Application

EverGuard Extreme<sup>®</sup> TPO preformed accessories are designed for use with GAF EverGuard Extreme<sup>®</sup> TPO single-ply membranes. The preformed accessories may be installed on mechanically attached, fully adhered, or self-adhered EverGuard Extreme<sup>®</sup> TPO roofing systems. Preformed accessories are installed using conventional techniques. See published application and specifications manual for detailed instructions.

## Product Information

EverGuard Extreme<sup>®</sup> Split Pipe Boots are constructed from EverGuard Extreme<sup>®</sup> reinforced 45 mil membranes. Three standard sizes of Split Pipe Boots are available. Since they are split, they can be wrapped around pipes and conduit where closed boots cannot be used.



## Split Pipe Boot

- Available in 3 standard sizes
- Custom sizes also available\*

SHIPPING SPECIFICATIONS	
Boots per box:	6
Weight per box:	
1" - 2"	7.5 lbs.
3" - 5"	7.5 lbs.
6" - 8"	11 lbs.
Boxes per pallet:	
1" - 2"	36
3" - 5"	36
6" - 8"	24

\*Contact your local representative for details.

Quality You Can  
Trust... From  
North America's  
Largest Roofing  
Manufacturer!™

[gaf.com](http://gaf.com)

Visit [gaf.com](http://gaf.com) to see our full line of pre-fabricated accessories!



# EverGuard EXTREME

Advanced Protection® TPO

## Preformed Accessories

# TPO Preformed Accessories

### Description

EverGuard Extreme® TPO single-ply roofing system preformed accessories provide roofing contractors an easy-to-install, factory-built detail. EverGuard Extreme® preformed accessories are constructed from GAF's proven durable EverGuard Extreme® TPO single-ply reinforced membrane.

- **Cost effective...**  
Reduces installed costs
- **Improved reliability...**  
Factory-built accessories reduce risk of leaks and callbacks
- **Improved aesthetics...**  
Uniform look

### Application

EverGuard Extreme® TPO preformed accessories are designed for use with GAF EverGuard Extreme® TPO single-ply membranes. The preformed accessories may be installed on mechanically attached, fully adhered, or self-adhered EverGuard Extreme® TPO roofing systems. Preformed accessories are installed using conventional techniques. See published application and specifications manual for detailed instructions.

### Product Information

EverGuard Extreme® Square Tube Wraps are constructed from EverGuard Extreme® reinforced 45 mil membrane. Three standard sizes of Square Tube Wrap are available. They are split and can be wrapped around square and rectangular roof structures such as machinery screen supports. A stainless-steel clamp is included to assist in sealing the top edge of the wrap.



## Square Tube Wrap

- Available in 3 standard sizes
- Custom sizes also available\*
- Includes stainless-steel clamp for top edge seal

SHIPPING SPECIFICATIONS	
Pieces per box:	6
Weight per box:	6.0 lbs. (4" x 4")
	6.5 lbs. (4" x 6")
	7.0 lbs. (6" x 6")
Boxes per pallet:	24
PRODUCT SKUs	
EverGuard Extreme® TPO Square Tube Wrap 4" x 4"	81E06776
EverGuard Extreme® TPO Square Tube Wrap 4" x 6"	81E08776
EverGuard Extreme® TPO Square Tube Wrap 6" x 6"	81E07776

\*Contact your local representative for details.

Quality You Can Trust... From North America's Largest Roofing Manufacturer!™

[gaf.com](http://gaf.com)

Visit [gaf.com](http://gaf.com) to see our full line of pre-fabricated accessories!



**Description**

EverGuard<sup>®</sup> TPO single ply roofing system molded accessories provide roofing contractors an easy-to-install, factory-built detail. EverGuard<sup>®</sup> molded accessories are manufactured using a proprietary formulation designed for use with GAF's EverGuard<sup>®</sup> TPO single-ply membranes.

- **Cost effective...**  
Reduces installed costs by up to 25%
- **Improved Reliability...**  
Factory built accessories reduce risk of leaks and callbacks
- **Improved aesthetics...**  
Uniform look

**Application**

EverGuard<sup>®</sup> TPO molded accessories are designed for use with GAF EverGuard<sup>®</sup> TPO single-ply membranes and EverGuard<sup>®</sup> Freedom<sup>™</sup> TPO self-adhering membranes. The molded accessories may be installed on mechanically attached, fully adhered or self-adhered EverGuard<sup>®</sup> TPO roofing systems. EverGuard<sup>®</sup> molded accessories are installed using conventional techniques. See published application and specifications manual for detailed instructions.

**Product Information**

EverGuard<sup>®</sup> pourable sealer pockets are molded from a proprietary TPO formulation engineered to work with EverGuard<sup>®</sup> TPO single-ply membranes. They eliminate the need for contractors to fabricate a pitch pocket in the field.



**Pourable Sealer Pocket**

- Perfect for irregular roof penetrations
- Fill with EverGuard<sup>®</sup> TPO pourable sealer or TOPCOAT<sup>®</sup> FlexSeal<sup>™</sup> for the perfect finish
- Available in custom colors and sizes\*

SPECIFICATIONS	
Total Width of Pocket	12"
Total Length of Pocket	15 1/4"
Height of Walls	4"
SHIPPING SPECIFICATIONS	
Box Size	28" x 12" x 12"
Pieces per box	6
Weight per box	6.5 lbs
Boxes per pallet	16
Pallet Size	42" x 42"
PRODUCT SKUs	
White	8002920CU

\* Contact your local representative for details.

**Also Available...**



Fluted Corner



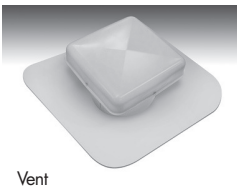
Inside Corner



Vent Boot



Universal Corner



Vent

Quality You Can Trust... From North America's Largest Roofing Manufacturer!<sup>™</sup>

[gaf.com](http://gaf.com)



# EverGuard<sup>®</sup>TPO SINGLE-PLY ROOFING SYSTEMS

## Sealant

# TPO Sealants

### Description

EverGuard<sup>®</sup> One-Part Pourable Sealant is a one-part, moisture-cure, self-leveling sealant designed for use in pitch pans on single-ply roof systems. Since moisture-cure sealants cure with moisture in the air, it is suitable for application in damp and cold climates, as well as in dry climates. EverGuard<sup>®</sup> One-Part Pourable Sealant is solvent free, contains no isocyanates, and will not shrink upon curing. It does not "outgas" or bubble on damp surfaces as urethane sealants often do. EverGuard<sup>®</sup> One-Part Pourable Sealant is elastomeric and has excellent adhesion to most construction materials. It has a low durometer, which accommodates greater movement in penetration seals than typical urethane sealants.

### Use

EverGuard<sup>®</sup> One-Part Pourable Sealant is designed for use with the EverGuard<sup>®</sup> Pourable Sealer Pocket on new and existing TPO roofs to seal irregular penetrations, such as metal frames, wires, and pipes. Note: EverGuard<sup>®</sup> TPO Primer is required to prime the TPO surface before use.

### Advantages

- Solvent free – less than 25 g/L VOC
- 100% solid – will not shrink
- No outgassing on damp surfaces
- Self-leveling provides a smooth, professional finished look
- Good color stability
- 20-minute skinover time
- Paintable within 24 hours
- No special tools or mixing required
- Application at temperatures as low as 30°F (-1°C)



## One-Part Pourable Sealant

TYPICAL PROPERTIES	
VOC (max)	<25 grams/liter
Service Temperature	-40°F (-40°C) to 200°F (93.3°C)
Full Cure	Rate of cure is dependent on atmospheric conditions. Curing proceeds at a rate of ¼" (6.35 mm) a week at 70°F (22°C) and 50% relative humidity. Lower temperature and humidity will slow the rate of cure. Higher temperature and humidity will accelerate rate of cure. Depths of more than 2" (51 mm) will cure through in 2 to 3 months.
Skin Time	Approximately 20 minutes at 70°F (22°C) and 50% relative humidity.
Shrinkage	0%
Tensile Strength	146 lbf (217 kg/m)
Elongation	300% ± 25%
Density	8.9 ± .2 lb. per gallon (1.068 g/ml)

Quality You Can Trust... From North America's Largest Roofing Manufacturer!™

[gaf.com](http://gaf.com)

# EverGuard<sup>®</sup>TPO

## SINGLE-PLY ROOFING SYSTEMS

### Approvals & Certification

- Conforms to OTC Rule for Sealants and Caulks
- Meets requirements of California Regulations: CARB, BAAQMD, and SCAQMD
- Conforms to California Proposition 65
- Conforms to USDA Requirements for Non-food Contact

### Environmental Standards

LEED<sup>®</sup> 2.2 for New Construction and Major Renovations:

- Low-Emitting Materials (Section 4.1) 1 Point

NAHB Model Green Home Building Guidelines:

- 5 Global Impact Points

VOC Content:

- Less than 25 grams/liter ASTM D2369 EPA Method 24 (tested at 240°F [115°C])

### Application Temperature

EverGuard<sup>®</sup> One-Part Pourable Sealant can be applied at temperatures as low as 30°F (-1°C). In these colder temperatures, it is recommended to keep the material stored inside or in a truck before using.

### Application Instructions

Surface should be clean, dry, and free of any loose materials. Remove all previously applied caulk, mastic, cement, and other contaminants from penetrations with a cleaner. All roof deck voids are to be filled with FlexSeal<sup>™</sup> Sealant. Prime all surfaces with EverGuard<sup>®</sup> TPO Primer. Allow primer to dry prior to applying EverGuard<sup>®</sup> One-Part Pourable Sealant. Fill the EverGuard<sup>®</sup> Pourable Sealer Pocket with EverGuard<sup>®</sup> One-Part Pourable Sealant to the top of the pocket, ensuring that all voids are filled. See GAF's published application and specifications manual for complete details.

### Clean-up

Wet adhesive can be removed using a solvent, such as alcohol. Cured EverGuard<sup>®</sup> One-Part Pourable Sealant can be removed by abrading or scraping the substrate.

### Cure Time

EverGuard<sup>®</sup> One-Part Pourable Sealant is a moisture-cure sealant. Rate of cure is dependent on atmospheric conditions. Curing proceeds at a rate of ¼" (6 mm) a week at 70°F (22°C) and 50% relative humidity. Lower temperature and humidity will slow the rate of cure. Higher temperature and humidity will accelerate

rate of cure. Depths of more than 2" (51 mm) will cure through in 2 to 3 months.

### Packaging

- .053 gallon (2L) pouch
- 4 pouches/case
- 48 cases/pallet

### Color

White

### Storage

- Recommended storage is between 40°F–90°F (4°C–32.2°C). Store unopened containers in a cool, dry area. Protect unopened containers from water, heat, and direct sunlight. Although EverGuard<sup>®</sup> One-Part Pourable Sealant will not freeze, it is recommended to store indoors before using to ensure easy gunning and leveling.

### Shelf Life

One year from date of manufacture when stored in recommended conditions. Elevated temperature and high relative humidity may significantly reduce shelf life.

### Precautions

- Do not apply at temperatures below 30°F (-1°C).
- Do not use on TPO without EverGuard<sup>®</sup> TPO Primer.
- Do not use on Hypalon<sup>®</sup> membranes.
- Do not install if rain is anticipated within 4 hours.
- Do not use in areas subject to continuous water immersion.
- Do not use in areas where prolonged chemical exposure is anticipated.
- Do not prime bonding surfaces with asphalt primer.
- Use TOPCOAT<sup>®</sup> FlexSeal<sup>™</sup> Elastomeric Sealant as a "night sealant" around the base of the penetration. Do not use petroleum-based solvents, such as mineral spirits, for cleaning purposes.
- Maintain sealant at room temperature before applying to ensure easy gunning and leveling.
- Test and evaluate to ensure adequate adhesion.
- Dry all visible and standing water prior to applying sealant.

### For Application Questions

Contact GAF Technical Services at 1-800-766-3411 or visit [gaf.com](http://gaf.com).

# Product Data Sheet

## EverGuard® Sealants

### Description

GAF EverGuard® single-ply roofing systems include a full line of EverGuard®/GAF sealants.

**Note:** EverGuard®/GAF sealants are specially formulated for specific applications: be sure to use the correct sealant for the application. The following EverGuard®/GAF sealants are available:

Product	Description	Benefit/Application	Units Per Carton	Carton Weight
<b>EverGuard® Water Block</b>	One-part butyl-based high-viscosity sealant	<ul style="list-style-type: none"> <li>• Suitable for sealing between flashing membrane and substrate surface behind exposed termination bars</li> <li>• Suitable for sealing between roofing membrane and drain flanges</li> </ul>	25 10.5 oz. cartridges	13 lbs.
<b>EverGuard® 2-Part Pourable Sealant</b>	100% solids urethane-based two-part sealant	<ul style="list-style-type: none"> <li>• Suitable for filling sealant pans at irregularly-shaped penetrations</li> </ul>	1 kit = 1 gal Part A and 1 pint Part B 2 kits per carton	18 lbs.
<b>EverGuard® TPO &amp; PVC Cut Edge Sealant</b>	Sealant used at any non-factory edge of TPO and PVC membrane	<ul style="list-style-type: none"> <li>• Used to seal non-factory edges (cut edges) as a final step in reinforced membrane installation</li> <li>• PVC Cut Edge with PVC</li> <li>• TPO Cut Edge with TPO</li> </ul>	<ul style="list-style-type: none"> <li>• 12 pints/ctn.</li> <li>• 100 lineal feet per pint @ 1/8" diameter bead.</li> </ul>	12 lbs.

**Storage:**

- Store sealants in original containers on pallets or shelving in a dry area.
- Store sealants in 50-100°F conditioned area away from open flame or other combustion source.
- Do not allow to freeze.



# EVERGUARD® TPO Accessory

# TPO Accessories



## TPO Primer

### Description

Used for preparing metal and membrane for application of cover tape, and preparing membrane and pourable sealer pockets to apply EverGuard® One-Part or Two-Part Pourable Sealant.

### Application

#### Pourable Sealant Pocket

Prior to filling the TPO Pourable Sealant Pocket, the inside vertical pan sides must be primed with GAF TPO Primer. Fill the base of the pans with non-shrink grout and top with a minimum 2" thickness of GAF One-Part or Two-Part Pourable Sealant.

### Cover Tape

When installing Cover Tape, apply EverGuard® TPO Primer or EverGuard® Low VOC TPO Primer to both the metal and membrane with a 3" roller. Allow primer to flash off before applying tape.

### HW Cover Tape

When installing Heat Weld Cover tape, apply EverGuard® TPO Primer or EverGuard® Low VOC TPO Primer to the metal only with a 3" roller. Allow the primer to flash off prior to installing HW Cover Tape.

SPECIFICATIONS	
Can size	1 gallon
Cans per carton	6
Product SKUs:	
TPO Primer	755B
Low VOC TPO Primer	755D

Quality You Can Trust... From North America's Largest Roofing Manufacturer!™