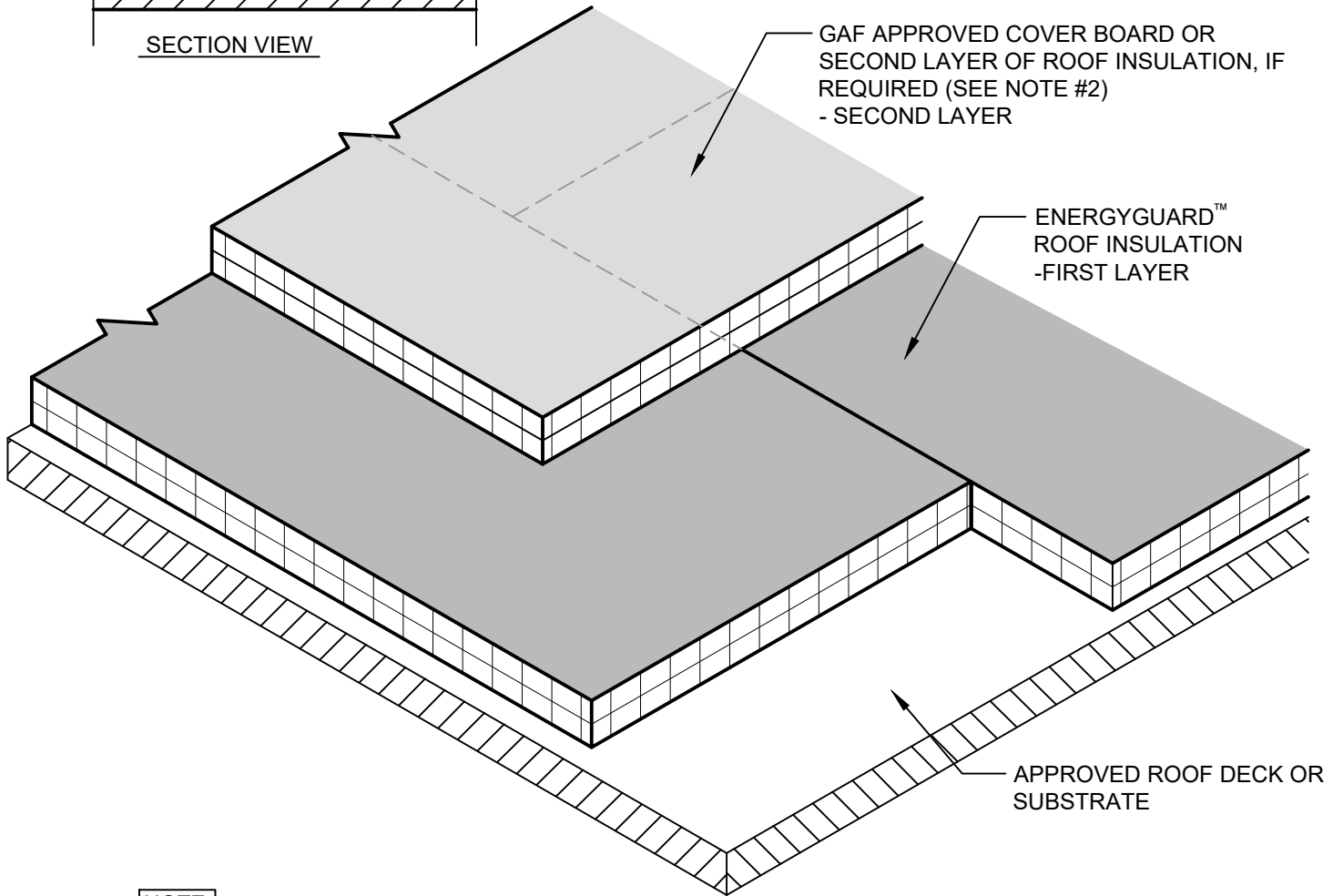
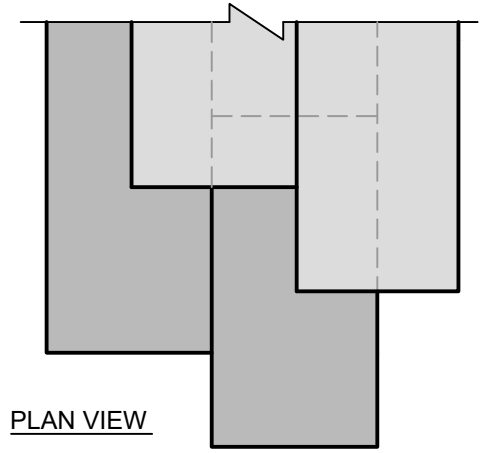
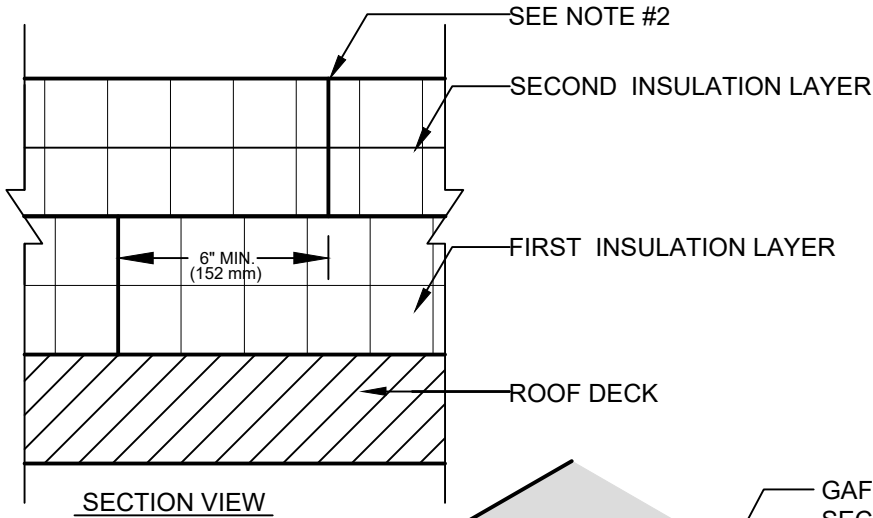


INSULATION



NOTE:

1. REFER TO THE SPEC MANUAL FOR DETAILED INSTALLATION REQUIREMENTS.
2. INSULATION BOARDS INSTALLED IN SINGLE OR MULTIPLE LAYERS MUST HAVE THE JOINTS BETWEEN THE BOARDS STAGGERED IN ALL DIRECTIONS A MINIMUM OF 6" (152 mm) BETWEEN LAYERS.
3. INSULATION BOARDS INSTALLED OVER STEEL DECKING MUST HAVE BOARDS PLACED PERPENDICULAR TO DECK FLUTES WITH EDGES OVER FLUTE SURFACE FOR BEARING SUPPORT.



STAGGERED INSULATION BOARD LAYOUT

LEGEND

DRAWING #
101

ISSUE / REVISION DATE

5/21/21

SCALE

N.T.S.