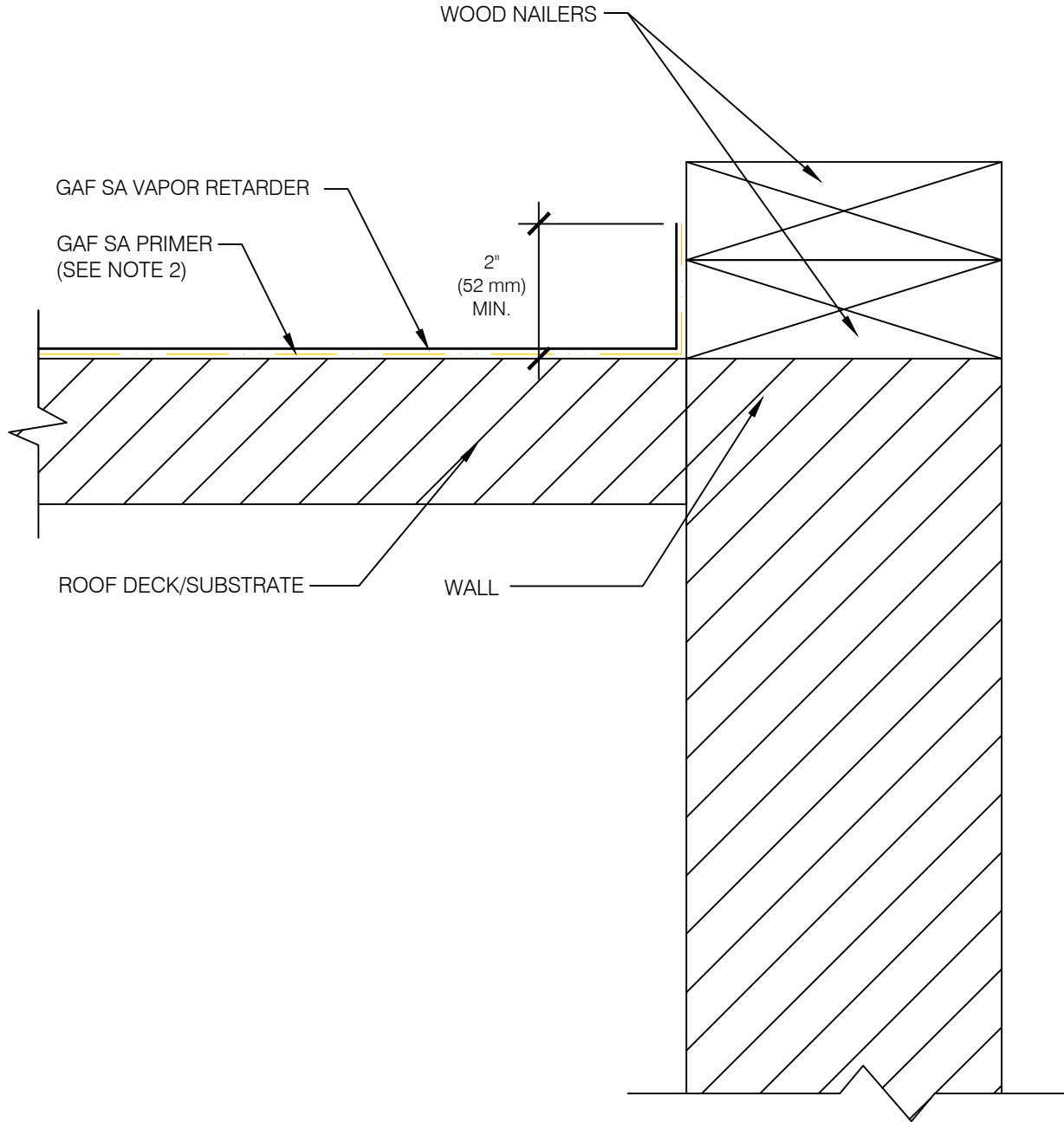




# SA VAPOR RETARDER

Self-Adhered Membrane



### NOTES:

1. USE DETAIL IN CONJUNCTION WITH THE STANDARD ROOF EDGE DETAIL FOR APPROVED ROOF SYSTEM.
2. FOR GAF SA VAPOR RETARDER XL, PRIMER IS NOT REQUIRED.
3. REFER TO GAF SA PRIMER INSTALLATION INSTRUCTIONS FOR GENERAL GUIDELINES.
4. A MINIMUM 1/2" (12.7 mm) THICK GLASS-MAT-FACED OR FIBER-REINFORCED GYPSUM BOARD IS REQUIRED OVER STEEL DECKS.
5. MAINTAIN SEPARATION BETWEEN VAPOR RETARDER AND MEMBRANE/ADHESIVES TO AVOID POTENTIAL INCOMPATIBILITY ISSUES.

LEGEND	<b>ROOF EDGE DETAIL</b>			DETAIL
	ROOF AREA	ISSUE DATE	SCALE	<b>202</b>
	ROOF EDGE	7/22/22	N.T.S.	