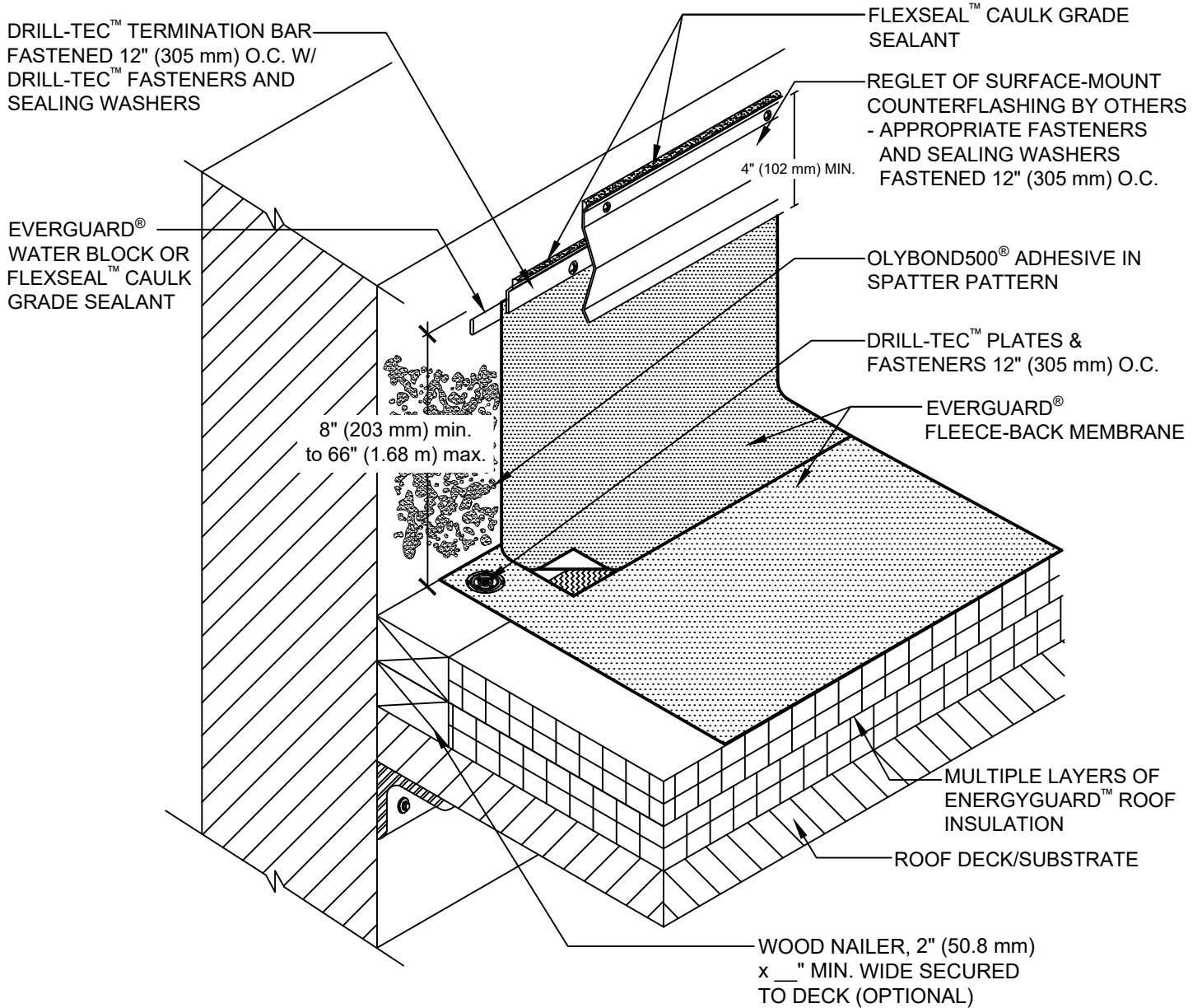


**SINGLE-PLY: TPO & PVC**  
Fleece-Back membranes



**NOTE:**



1. EXISTING REGLET IS ACCEPTABLE IF METAL IS IN GOOD CONDITION.
2. EXPOSED WALLS/CURBS MUST BE WATERPROOFED AND MAINTAINED ABOVE THE BASE FLASHING IN ORDER FOR ANY SURFACE-MOUNTED TERMINATION TO BE EFFECTIVE.



**ALTERNATE LOW RISE FOAM AT WALL ATTACHMENT**

DRAWING #	THIS DETAIL APPLIES TO:	ISSUE / REVISION DATE	SCALE
<b>306C</b>	ADHERED SYSTEMS	5/21/21	N.T.S.

**LEGEND**

-  HEAT-WELDED
-  FLEXSEAL™ CAULK GRADE SEALANT