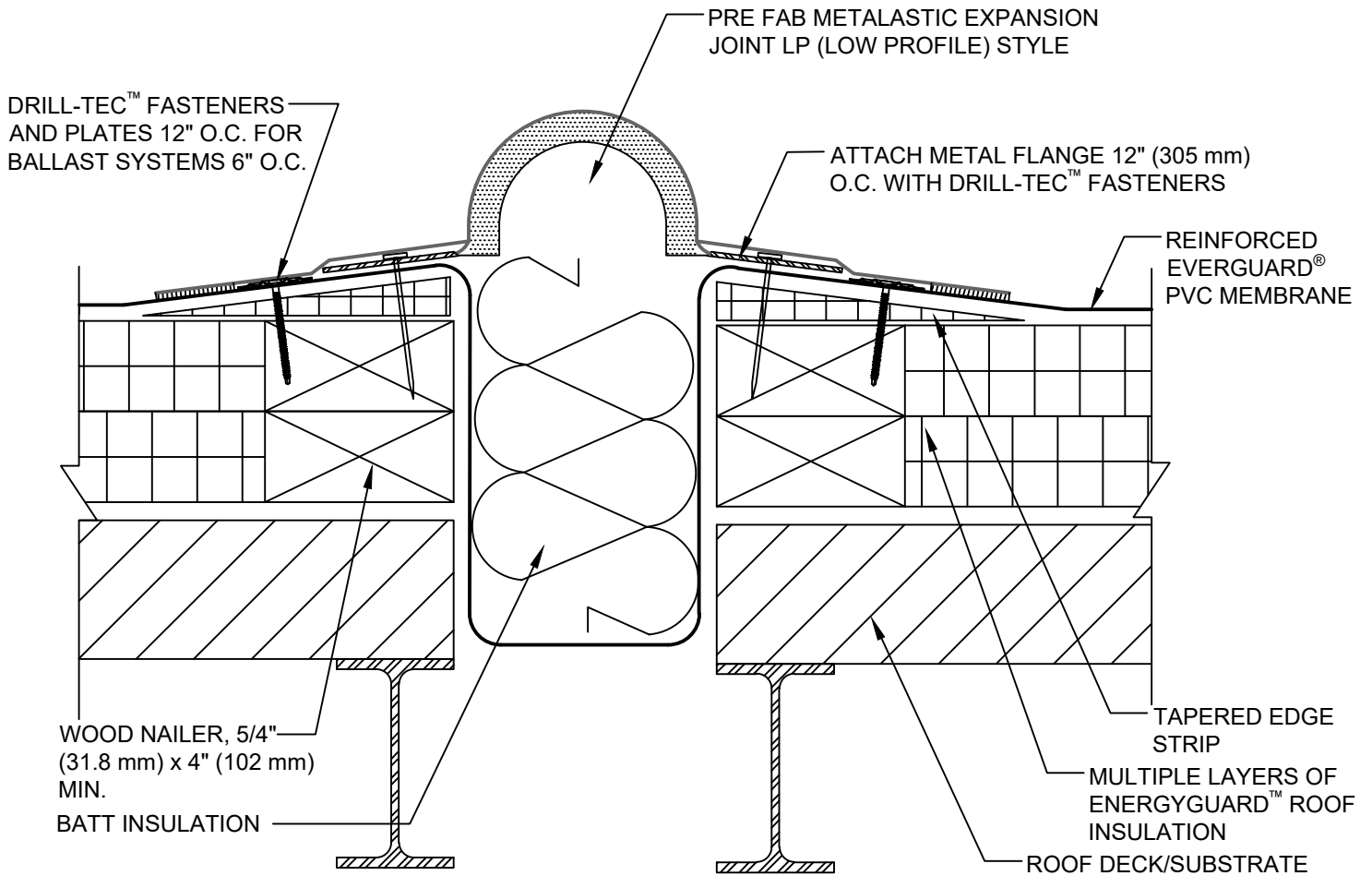
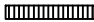


# SINGLE-PLY: PVC



**NOTE:**

1. FOR INSULATION THICKNESS GREATER THAN 8" (203 mm), A COVER BOARD IS REQUIRED ON MECHANICALLY ATTACHED SYSTEMS ONLY.
2. EVERGUARD® PRE FABRICATED METALASTIC EXPANSION JOINTS MUST BE CUSTOM ORDERED TO SPAN EXPANSION OPENING.

<b>GAF</b>	<b>PVC METALASTIC EXPANSION JOINT - FLAT TYPE</b>			<b>LEGEND</b>
	DRAWING # <b>401C</b>	THIS DETAIL APPLIES TO: ALL SYSTEMS	ISSUE / REVISION DATE 8/17/20	SCALE N.T.S.
				 HEAT-WELDED