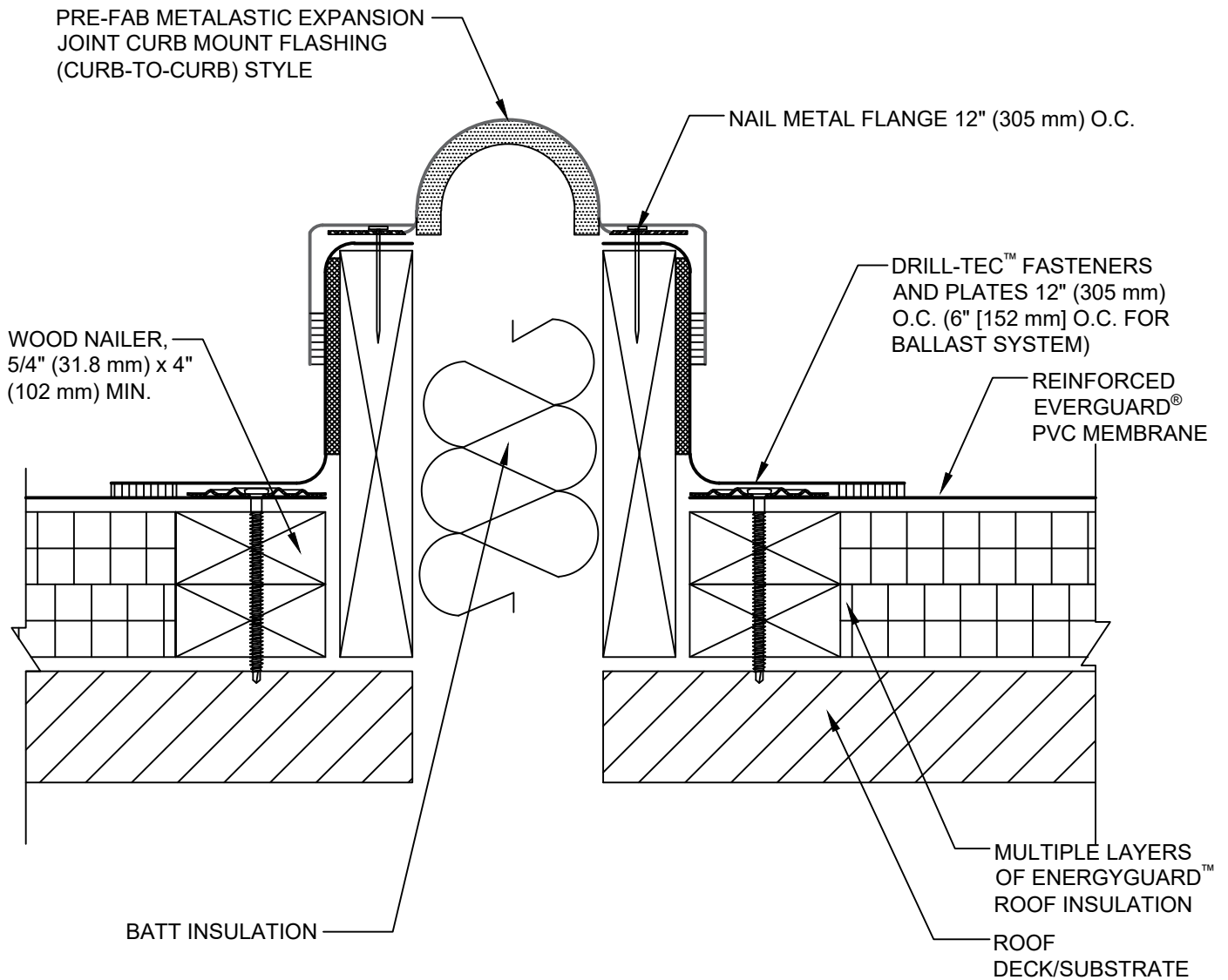


SINGLE-PLY: PVC



NOTE:

1. FOR INSULATION THICKNESS GREATER THAN 8" (203 mm), A COVER BOARD IS REQUIRED ON MECHANICALLY ATTACHED SYSTEMS ONLY.
2. EVERGUARD® PRE-FABRICATED METALASTIC EXPANSION JOINTS MUST BE CUSTOM ORDERED TO SPAN EXPANSION OPENING.



PVC METALASTIC EXPANSION JOINT - CURB TYPE

DRAWING #
402C

THIS DETAIL APPLIES TO:
ALL SYSTEMS

ISSUE / REVISION DATE
8/17/20

SCALE
N.T.S.

LEGEND

- HEAT-WELDED
- EVERGUARD® BONDING ADHESIVE (OPTIONAL)