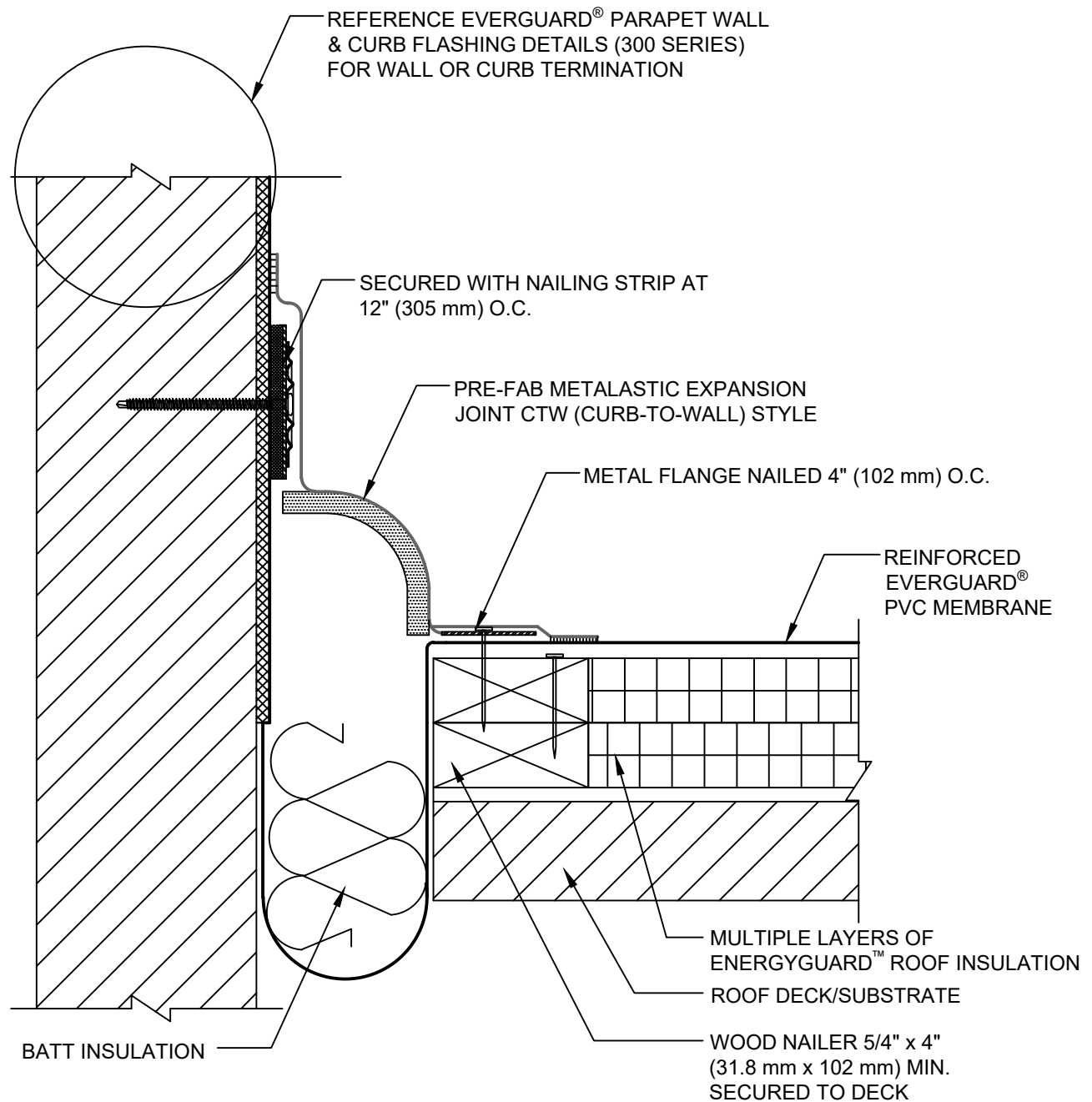


# SINGLE-PLY: PVC



**NOTE:**

1. FOR INSULATION THICKNESS GREATER THAN 8" (203 mm), A COVER BOARD IS REQUIRED ON MECHANICALLY ATTACHED SYSTEMS ONLY.
2. EVERGUARD® PRE-FABRICATED METALASTIC EXPANSION JOINTS MUST BE CUSTOM ORDERED TO SPAN EXPANSION OPENING.



## PVC METALASTIC WALL EXPANSION JOINT - FLAT TYPE

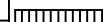

DRAWING #  
**403C**

THIS DETAIL APPLIES TO:  
ALL SYSTEMS

ISSUE / REVISION DATE  
8/17/20

SCALE  
N.T.S.

**LEGEND**

-  HEAT-WELDED
-  EVERGUARD® BONDING ADHESIVE  
-OPTIONAL UP TO 30" (762 mm) FLASHING HEIGHT