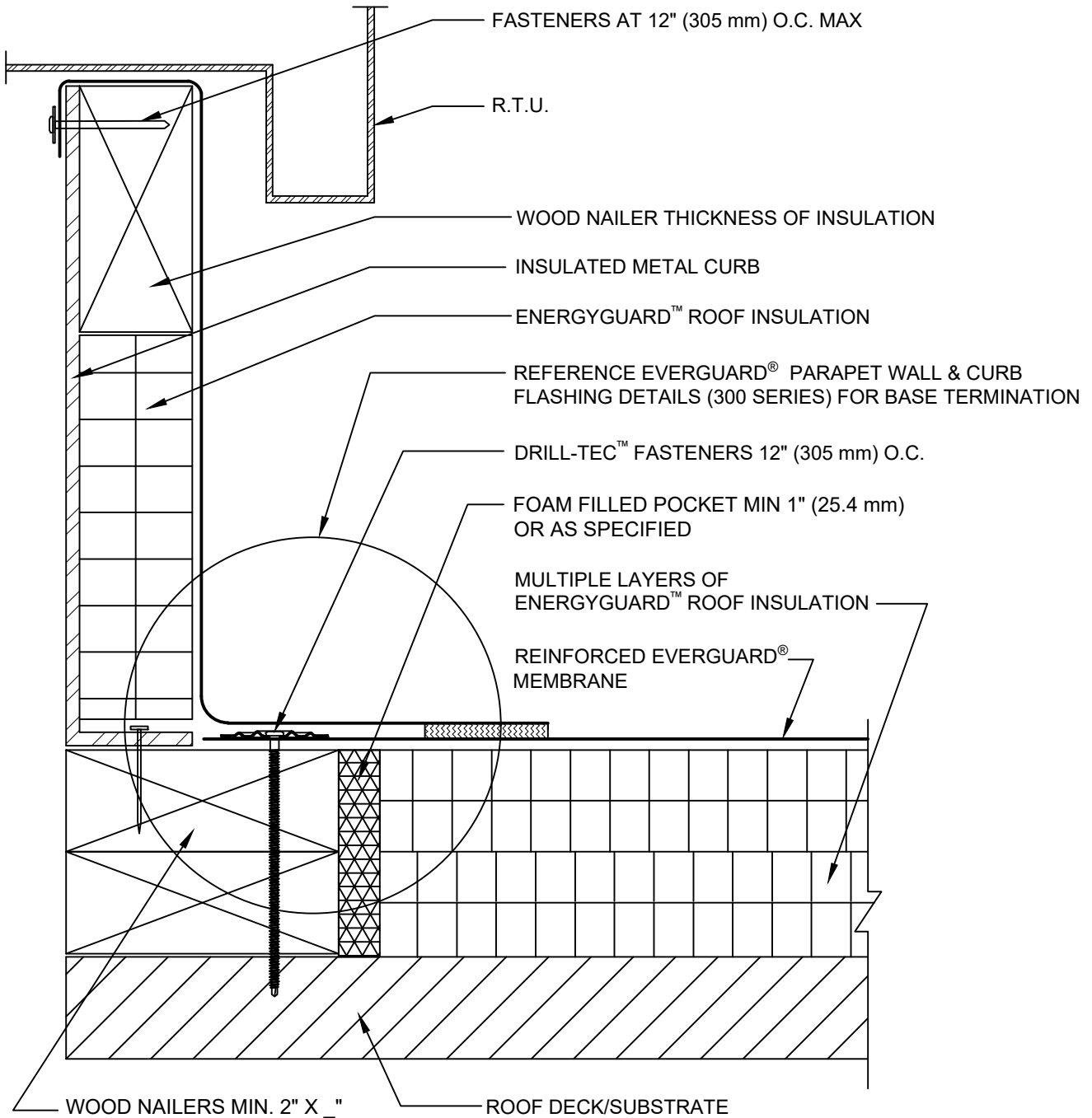




SINGLE-PLY: TPO & PVC 60-80 mil membranes



NOTE:

1. FOR STEEL ROOF DECKS: FILL STEEL DECK FLUTES WITH SPRAY FOAM INSULATION PRIOR TO THE INSTALLATION OF ABOVE DECK INSULATION A MINIMUM OF 12 INCHES (305 mm) FROM FACE OF OPENING.



TERMINATION AT R.T.U. DETAIL WITH WELDED LAP

DRAWING #
503C

THIS DETAIL APPLIES TO:
ADHERED SYSTEMS
MECHANICALLY ATTACHED SYSTEMS
RHINOBOND® SYSTEMS

ISSUE / REVISION DATE
3/1/21

SCALE
N.T.S.

LEGEND

 HEAT-WELDED