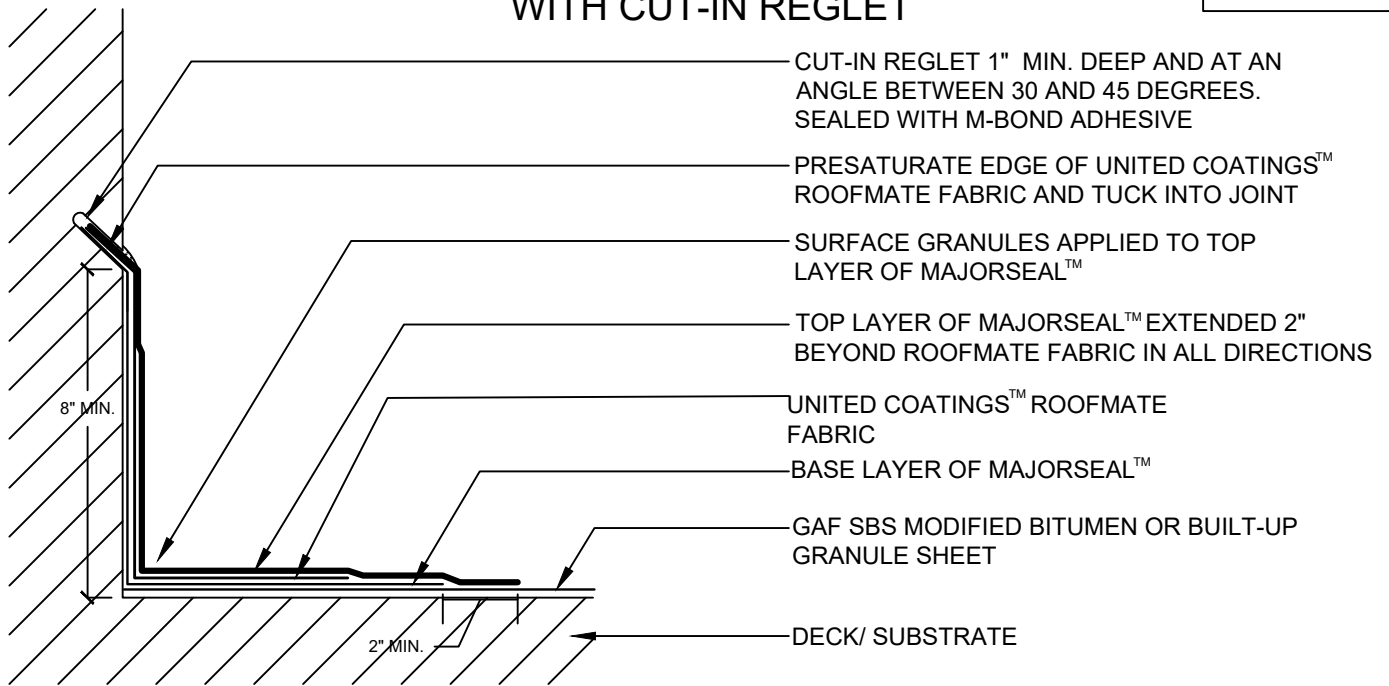


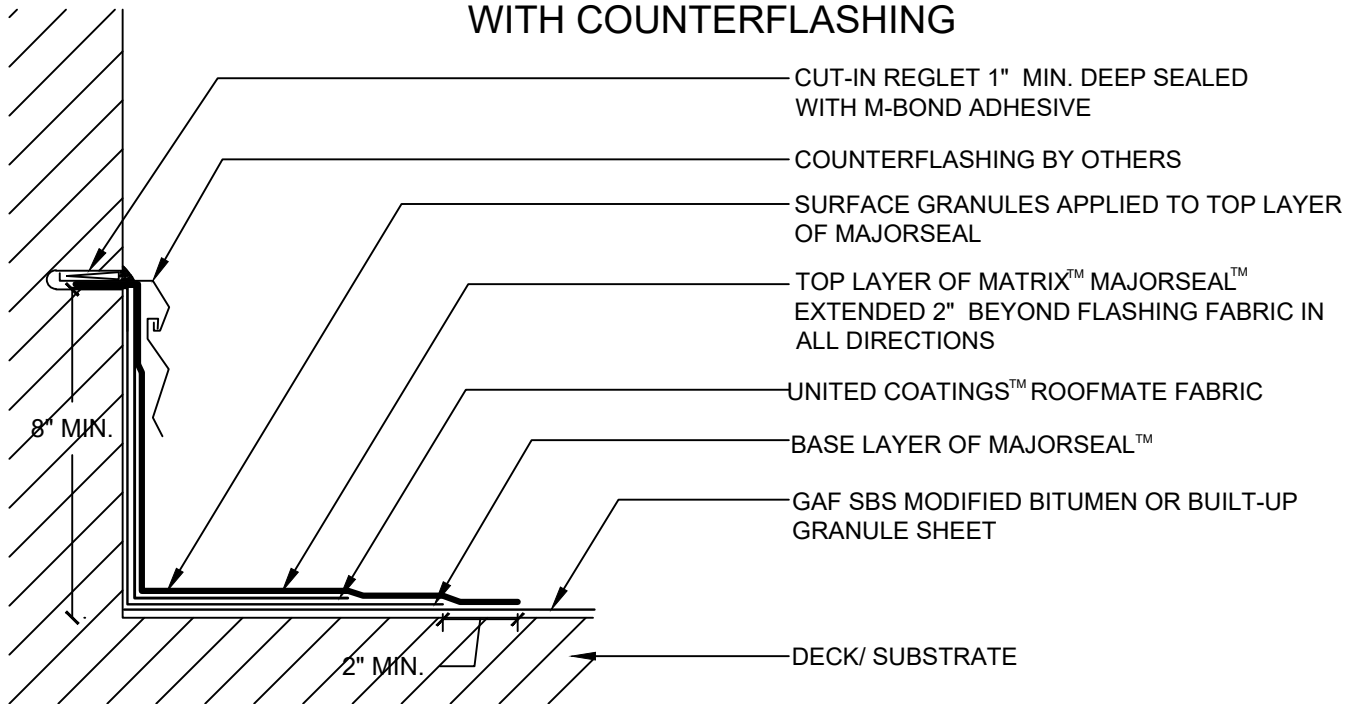
**20 YEAR MAX
GUARANTEE**

WITH CUT-IN REGLET



- CUT-IN REGLET 1" MIN. DEEP AND AT AN ANGLE BETWEEN 30 AND 45 DEGREES. SEALED WITH M-BOND ADHESIVE
- PRESATURATE EDGE OF UNITED COATINGS™ ROOFMATE FABRIC AND TUCK INTO JOINT
- SURFACE GRANULES APPLIED TO TOP LAYER OF MAJORSEAL™
- TOP LAYER OF MAJORSEAL™ EXTENDED 2" BEYOND ROOFMATE FABRIC IN ALL DIRECTIONS
- UNITED COATINGS™ ROOFMATE FABRIC
- BASE LAYER OF MAJORSEAL™
- GAF SBS MODIFIED BITUMEN OR BUILT-UP GRANULE SHEET
- DECK/ SUBSTRATE

WITH COUNTERFLASHING



- CUT-IN REGLET 1" MIN. DEEP SEALED WITH M-BOND ADHESIVE
- COUNTERFLASHING BY OTHERS
- SURFACE GRANULES APPLIED TO TOP LAYER OF MAJORSEAL
- TOP LAYER OF MATRIX™ MAJORSEAL™ EXTENDED 2" BEYOND FLASHING FABRIC IN ALL DIRECTIONS
- UNITED COATINGS™ ROOFMATE FABRIC
- BASE LAYER OF MAJORSEAL™
- GAF SBS MODIFIED BITUMEN OR BUILT-UP GRANULE SHEET
- DECK/ SUBSTRATE

NOTE:

1. IF GAF GRANULE MEMBRANE IS LEFT EXPOSED OVERNIGHT BEFORE INSTALLING MAJORSEAL™ LIQUID FLASHING, A TEMPORARY NIGHT SEAL MUST BE INSTALLED. THE NIGHT SEAL MUST BE COMPLETELY REMOVED BEFORE INSTALLING THE FLASHING.



ALTERNATE BASE FLASHING - 8" MIN.

LEGEND

DRAWING #
303

ISSUE / REVISION DATE
2/20/20

SCALE
N.T.S.