



Installation Guide for EverGuard WR Gutters

(Box, Offset, and Chamfer)

1 Campus Drive, Parsippany, NJ 07054 USA
973-628-3000
www.gaf.com

APPROVALS: Contact manufacturer for verification of test report data on your project

ANSI/SPRI-GT-1
TESTED

MIAMI-DADE COUNTY
APPROVED

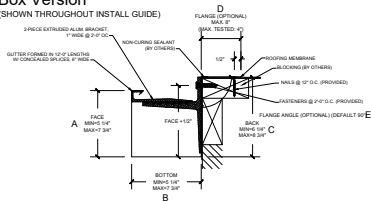
Installation Guide for EverGuard WR Gutters

ANSI/SPRI-GT-1 TEST PRESSURES UP TO 136 PSF (VERTICAL), AND 223 PSF (HORIZONTAL)
CONTACT US FOR APPROPRIATE RECOMMENDATIONS NEEDED TO MEET/EXCEED ANSI/SPRI-GT-1 DESIGN CRITERIA

FM
Approved

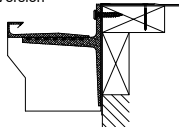
Box Version

(SHOWN THROUGHOUT INSTALL GUIDE)

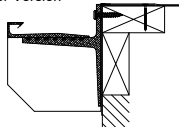


BOTTOM SIZES ARE PROVIDED IN 1/2" INCREMENTS (e.g. 5 1/4", 5 3/4", 6 1/4", ...)
FOR MASONRY APPLICATIONS, PLEASE CONTACT US.

Offset Version

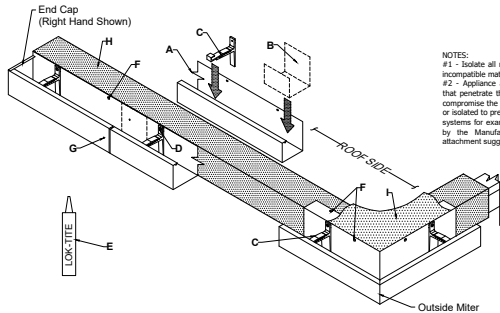


Chamfer Version



NOTES:

#1 - Isolate all metal parts from ACQ treated wood or other galvanically incompatible material with appropriate membrane material.
#2 - Appliance attachments, such as lightning rods, signs, or antennae that penetrate the edge system, induce a galvanic reaction, or otherwise compromise the effectiveness of the roof edge system, shall be eliminated or isolated to prevent problems per ANSI/SPRI/ED-1. Lightning protection systems for example must not be directly affixed to the product provided by the Manufacturer. Consult Manufacturer for alternative attachment suggestions.



A. Formed Gutter

12-ft. Lengths

B. Concealed Joint Splice

6-in. Lengths

C. Extruded Alum. Bracket

1-in. Length @ 24-in. OC

D. Universal Fastener

at All Bracket Locations
(Included & Required)

E. Lok-Tite

at All Brackets
(Included & Required)

F. Nails

(Included & Required)

G. Aluminum Pop-Rivet

(Included & Required)

H. Base Ply Membrane

(By Others)

I. Strip-In Ply

(By Installer)

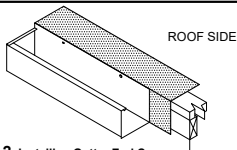
GAF

GAF

DOWNSPOUT OUTLET

**STEP 1: Installing Downspout Outlets**

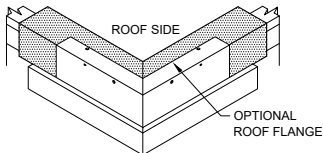
Determine outlet locations and field cut hole in the gutter bottom. Insert outlet into hole, apply a continuous bead of non-curing sealant to flange and fasten with (2) pop rivets in each flange from outside.



ROOF SIDE

STEP 2: Installing Gutter End Caps

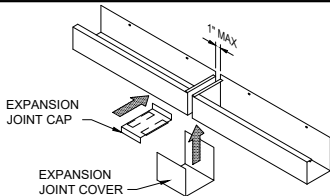
Locate the end caps for the appropriate locations. Secure to the roof edge using the nails (provided) in every other pre-punched hole. If optional roof flange is included install with nails in all holes in roof flange.



ROOF SIDE

OPTIONAL
ROOF FLANGE**STEP 3: Installing Gutter Miters**

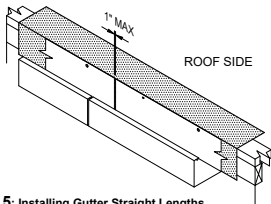
Locate the miters for the appropriate locations. Secure to the roof edge using the nails (provided) in every other pre-punched holes. If optional roof flange is included install with nails in all holes in roof flange.

EXPANSION
JOINT CAPEXPANSION
JOINT COVER

1" MAX

STEP 4: Installing Expansion Joints (If Required)

Install expansion joint in location as specified on roof plan(s). An expansion joint will consist of (2) pre-fabricated end caps, (1) expansion joint cap and (1) expansion joint cover. Gap the end caps at 1" max. Slide the joint cover onto the gutter, then pop rivet the joint cover in the same locations as shown in FIGURE 2. Place the joint cap over the end cap lips and center the joint cap over the gap, secure in place using the nails (provided).



1" MAX

ROOF SIDE

STEP 5: Installing Gutter Straight Lengths

Begin from the end caps/miters working inward to the center. **Allow 1/4" gap between gutter sections for thermal expansion.** Review lengths of all straight pieces prior to cutting to avoid creating relatively short sections of cap adjacent to full length section.

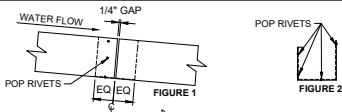
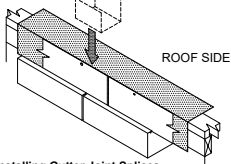
1/4" GAP
WATER FLOW
POP RIVETS
EQ EQ
FIGURE 1

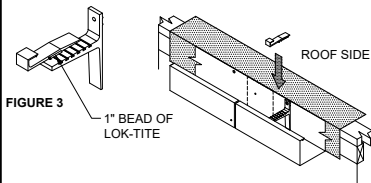
FIGURE 2



ROOF SIDE

STEP 6: Installing Gutter Joint Splices

Locate the joint splice for the appropriate gutter. Apply a continuous bead of non-curing sealant to both sides of the joint. Slide the joint splice down into the gutter. Secure the joint splice in place by pop riveting it on the high side of the joint (FIGURE 1) on the 3 surfaces as shown in FIGURE 2. There must be a joint splice at every joint.



ROOF SIDE

FIGURE 3

1" BEAD OF
LOK-TITE**STEP 7: Installing Gutter Brackets**

Install the bracket base first, secure it in place using the screw (provided). Then hook the top part of the bracket on the face lip of the gutter. Slide the top onto the base by 1/4" (MAX), then apply a 1" (MIN) continuous bead of Lok-Tite (provided) as shown in FIGURE 3. Then continue sliding the top onto the base, until they are aligned. The brackets should be installed at the pre-punched hole adjacent to the fasteners previously installed (24" OC max).